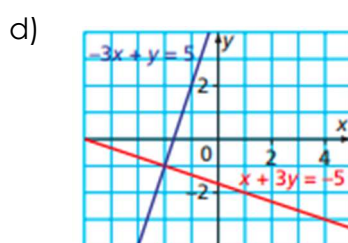
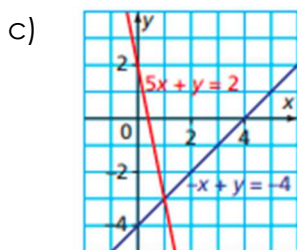
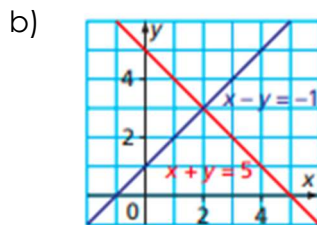
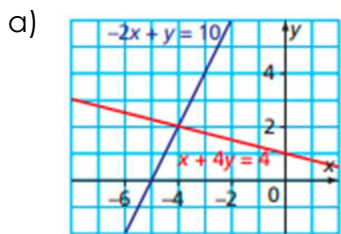


Exercise 6.1

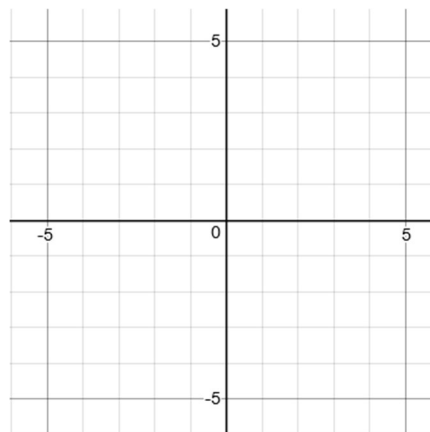
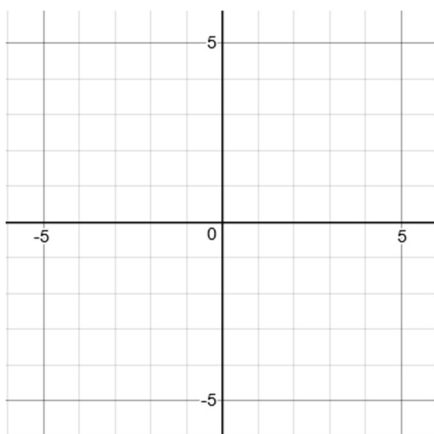
1. Determine the solution to the linear systems.



2. Solve each linear system graphically.

a) $y = 3x - 4$ and $y = -3x + 2$

b) $y = \frac{4}{3}x + 3$ and $y = -\frac{2}{3}x - 3$

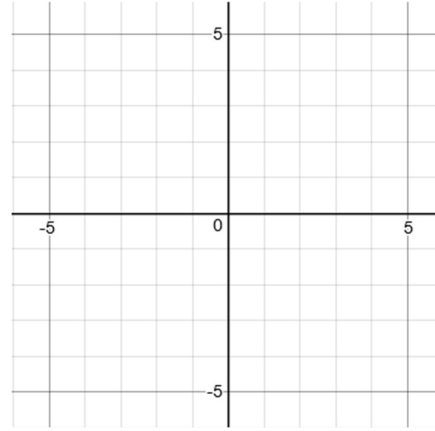
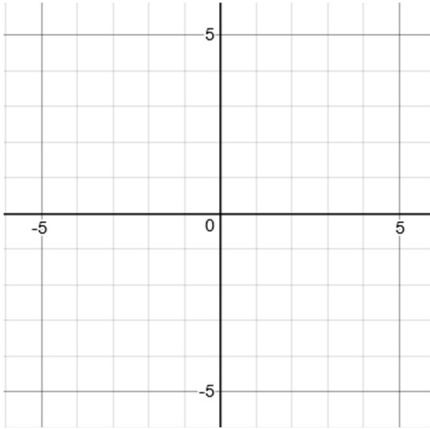


Solution: _____

Solution: _____

c) $y = \frac{1}{3}x + 2$ and $y = -x - 2$

d) $4x - y - 1 = 0$ and $2x + y - 5 = 0$

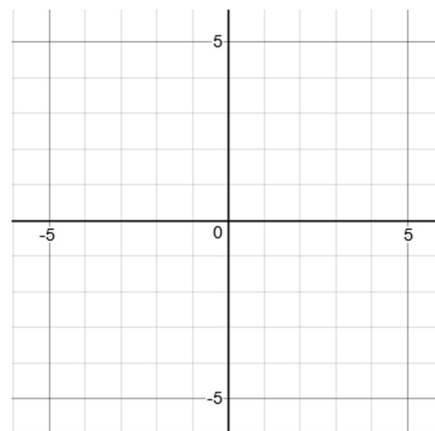
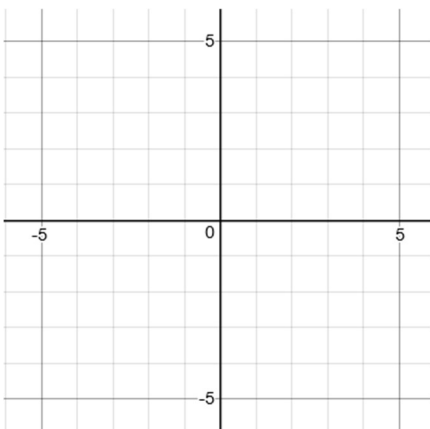


Solution: _____

Solution: _____

e) $y + 1 = -2x + 6$ and $2x + 3y = 3$

f) $x + 2y = -2$ and $2x + 12 = -4y$



Solution: _____

Solution: _____